



CASE  
STUDY

**Triflex**

Delivering solutions together.

CAR PARK WATERPROOFING,  
SURFACING AND MARKINGS

JERSEY

**SAND STREET**

Systems

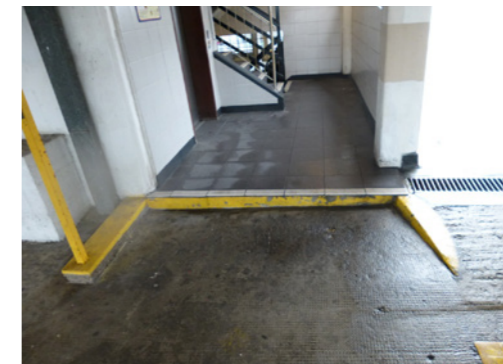
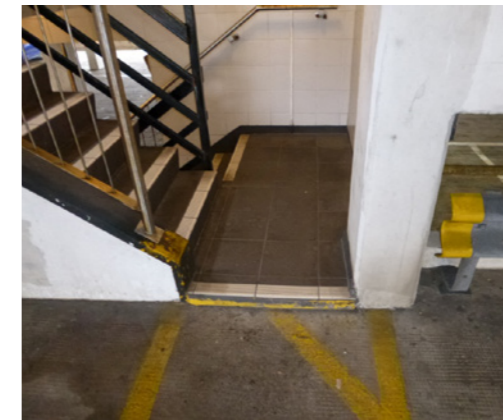
Triflex DeckFloor®

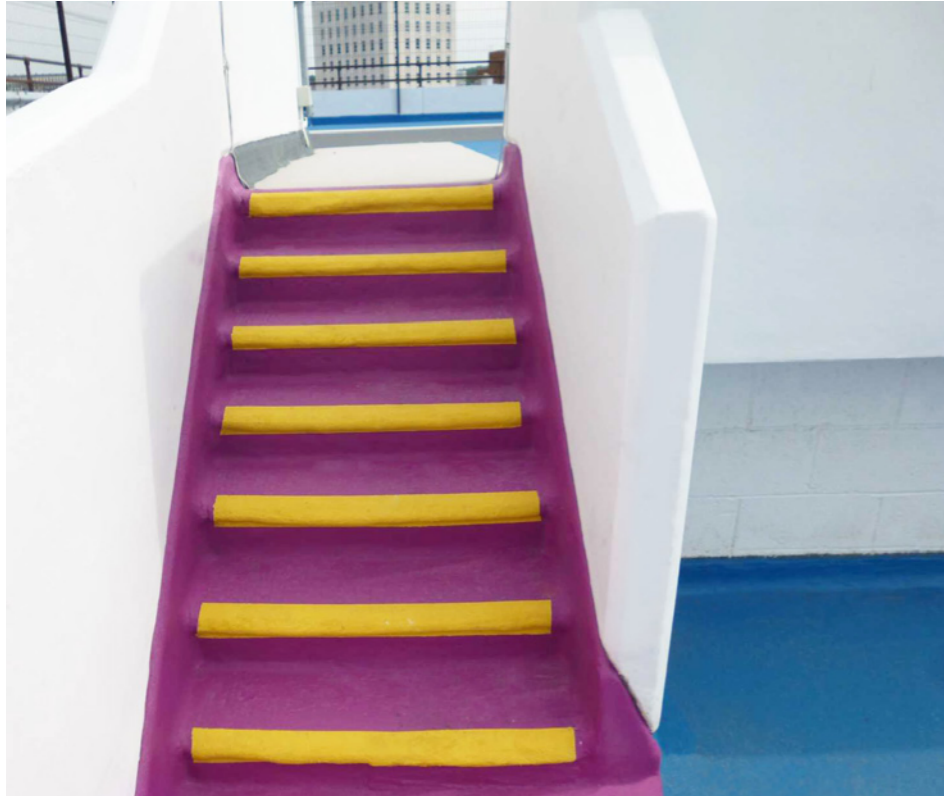
Triflex DCS-C

# The challenge

Sand Street, located in the bustling town of St Helier in Jersey, provides its residents with an abundance of local businesses, shops and restaurants and is also home to one of the main central multi-storey car parks which houses over 620 parking spaces over 14 levels.

Continuing their long and successful working partnership, States of Jersey asked Triflex to assess the busy car park and specify a solution for the waterproofing and surfacing of all internal and external decks, ramps and stairwells. Sand Street MSCP was the only remaining car park in States of Jersey portfolio that had not been treated with Triflex so as well as ensuring the structure was protected, it was also vital that the aesthetics of the car park were improved for users.





# The solution

The two external car park decks and ramps had been waterproofed with asphalt and were beginning to show signs of wear, with the aggregate becoming visible in certain areas. Dayjoints and cracks had also opened up which was allowing water ingress into the structure, and wheel indentations, blistering and deformation had formed.

The remaining 12 internal levels featured concrete which had been left unprotected from chloride and carbonation ingress. The decks were all exhibiting signs of wear, with cracks forming around the columns, and signs of mechanical damage and oil contamination.

The busy nature of the car park meant that it was vital that local businesses in the surrounding area were not directly affected whilst the works were completed. The specification of a fast track solution that would cause minimum disruption, noise and dust was therefore key.

Due to the busy nature and heavy traffic of the car park, it was essential that the new waterproofing and surfacing system was extremely hard wearing, durable and provided high levels of anti-skid. **Triflex DCS-C**, a heavy duty, rigid system suitable for the overlay of the existing concrete was specified for the internal decks and ramps of the car park. With its locally applied reinforced membrane that provides exceptional tensile strength and long term resistance to regular and unforeseen movement, **Triflex DCS-C** met the hard wearing and long term structural integrity demands that the multi-storey car park required.

# Triflex

Delivering solutions together.

Triflex is the leading European specialist in cold liquid applied resins. Our high-quality systems provide reliable and lasting waterproofing, surfacing, protection and markings for roofs, walkways, balconies, terraces and car parks. We are a family owned and operated company that provides individual solutions worldwide. From our production facilities based in Minden, Germany, we have been researching and developing solutions designed to protect and repair the built environment for more than 40 years.

From our UK headquarters based in Stone, Staffordshire we pride ourselves on providing our clients with tailored solutions and exceptional levels of service and support throughout all stages of their project. From conducting in-depth site surveys, to our comprehensive testing and off-site and on-site support, we ensure that your project is completed on time and to the highest standards. All Triflex solutions are certified to the highest standards and are backed up by long term meaningful warranties ensuring peace of mind.

01785 819119

[www.triflex.co.uk](http://www.triflex.co.uk)

[info@triflex.co.uk](mailto:info@triflex.co.uk)

[Triflex \(UK\) Ltd](#)

[@TriflexUK](#)

Triflex (UK) Ltd. | Whitebridge Way | Stone | Staffordshire | ST15 8JS

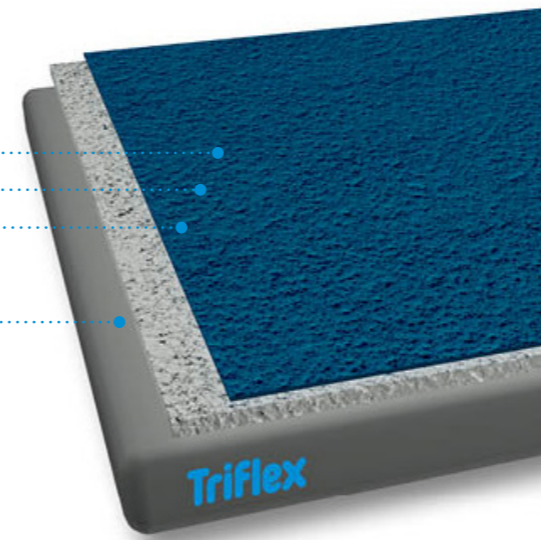
## System benefits

### Triflex DeckFloor®

- Totally cold applied, with no risk from hot works
- Compatible with virtually all substrates including asphalt
- Locally reinforced with ETA certified dynamic crack bridging membrane
- Thick layer, tough, durable and anti-skid
- Fully warranted
- Maximum colour and design options
- Locally reinforced with ETA certified dynamic crack bridging membrane

Waterproofing (single)

Primer (if required)



## System overview

### Triflex DCS-C

- Totally cold applied, with no risks from hot works
- Locally reinforced with ETA certified dynamic crack bridging membrane
- Optional locally reinforced, elastomeric waterproofing membrane
- Rapid curing system - even at low temperatures
- Maximum design options
- Designed to allow use on vertical surfaces
- Certified to the highest standards

Finish

Waterproof wearing layer

